

## APPENDIX 1

### Example of the forms used in the EBU Inquiry

Organisation: . . . . . Language: . . . . .

**Proposed basic character set**

1. Lower case letters	a b c d e f g h i j k l m n o p q r s t u v w x y z
2. Upper case letters	A B C D E F G H I J K L M N O P Q R S T U V W X Y Z
3. Punctuations/abbreviations	! " # \$ % ' ( ) * £ , - . / : ; < > ? _ &
4. Accented letters	
5. Symbols	1 2 3 4 5 6 7 8 9 0
6. Mathematical symbols	+ ÷ =
7. Pictograms	? ? ?
8. Others	

**Additional characters Romance languages (French, Italian, Spanish, Portuguese)**

1. Lower case letters	ã õ ñ ç œ
2. Upper case letters	Ã Õ Ñ
3. Punctuations/abbreviations	¡ ¨ \   ' - _
4. Accented letters	à á â è é ê ë ì í î ï ò ó ô ù ú û
5. Symbols	
6. Mathematical symbols	± °
7. Pictograms	?
8. Others	

Other languages that are likely to be required on the same broadcast page:

. . . . .

**Notes:**

- Please complete a separate form for each language likely to be required for teletext broadcasts by your organisation.
- Delete all redundant characters in both tables by a diagonal line.
- Insert all additional characters required in the appropriate section of the lower table, taking care to position them accurately within the rectangles.
- Only non-accented letters should be inserted in rows 1 and 2.
- No accented upper-case letters have been included in the tables. If any of these are considered to be essential, they should be inserted in row 4.
- The first character in row 3 of the basic set is a "blank" or space.

## APPENDIX 2

### The complete repertoire of Latin-based characters required by EBU Member-organisations

Each symbol is identified by a code corresponding to that used in CCITT Recommendations 5.61 and S.100.

Code	Symbol	Description	Code	Symbol	Description
LA01	* a	small a :	LH01	* h	Small h
LA02	* A	capital A	LH02	* H	capital H
LA11	* á	small a with acute accent	LI01	* i	small i
LA12	A	capital A with acute accent	LI02	* I	capital I
LA13	* à	small a with grave accent	LI11	* í	small i with acute accent
LA14	À	capital A with grave accent	LI12	Í	capital I with acute accent
LA15	* â	small a with circumflex accent	LI13	* ï	small i with grave accent
LA16	Â	capital A with circumflex accent	LI14	Ï	capital I with grave accent
LA17	* ä	small a with diaeresis or umlaut mark	LI15	* î	small i with circumflex accent
LA18	Ä	capital A with diaeresis or umlaut mark	LI16	Î	Capital I with circumflex accent
LA19	ã	small a with tilde	LI17	* ï	small i with diaeresis or umlaut mark
LA20	Ã	capital A with tilde	LI18	Ï	Capital I with diaeresis or umlaut mark
LA27	â	small a with ring	LI30	* I	Capital I with dot
LA28	Â	capital A with ring	LI31	* ti	small ij ligature
LA51	æ	small æ diphthong	LI52	* U	capital IJ ligature
LA52	Æ	capital .Æ diphthong	LI61	* I	small i without dot
LB01	* b	small b	LJ01	* j	small j
LB02	* B	capital B	LJ02	* J	capital J
LC01	* c	small c	LK01	* k	small k
LC02	* C	capital C	LK02	* K	capital K
LC11	c	small c with acute accent	LL01	* ?	Small l
LC12	C	capital C with acute accent	LL02	* ?	capital L
LC21	c	small c with caron	LL63	I	Small l with middle dot
LC22	C	capital C with caron	LL64	L.	capital L with middle dot
LC41	* ç	small c with cedilla	LM01	* m	small m
LC42	* Ç	capital C with cedilla	LM02	* M	Capital M
LD01	* d	small d	LN01	* n	small n
LD02	* D	Capital D	LN02	* N	capital N
LD61	d	Small d with stroke,	LN11	n	small n with acute accent
LD02	Ð	Capital D with stroke, Icelandic eth	LN19	ñ	small n with tilde
LD63	ð	small eth, Icelandic	LN20	* Ñ	capital N with tilde
LE01	* e	small e	LN21	* n	small n with caron
LE02	* E	capital E	LN61	?	small eng, Lapp
LE11	* é	small e with acute accent	LN62	?	capital eng, Lapp
LE12	É	capital E with acute accent	LO01	* o	small o
LE13	* è	small e with grave accent	LO02	* O	capital O
LE14	È	capital E with grave accent	LO11	* ó	small o with acute accent
LE15	* ê	small e with circumflex accent	LO12	Ó	capital O with acute accent
LE16	Ê	capital E with circumflex accent	LO13	* ò	small o with grave accent
LE17	* ë	small e with diaeresis or umlaut mark	LO14	Ò	capital O with grave accent
LE18	Ë	capital E with diaeresis or umlaut mark	LO15	* ô	small o with circumflex accent
LE21	e	small e with caron	LO16	Ô	capital O with circumflex accent
LF01	* f	small f	LO17	* ö	small o with diaeresis or umlaut mark
LF02	* F	capital F	LO16	Ö	capital O with diaeresis or umlaut mark
LG01	* g	small g	LO19	õ	small o with tilde
LG02	* G	capital G	LO20	Õ	capital O with tilde
LG23	* g	small g with breve	LO25	o	small o with double acute accent
LG24	G	capital G with breve	LO51	œ	small œ ligature
LG	Š	small g with stroke	LO52	Œ	capital Œ ligature
LG	G	capital G with stroke	LO61	ø	small o with slash
			LO62	Ø	capital O with slash

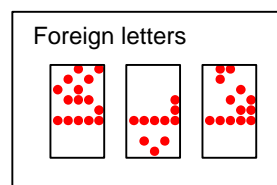
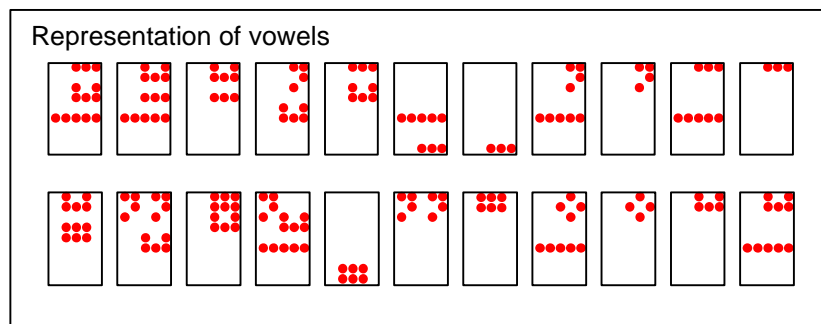
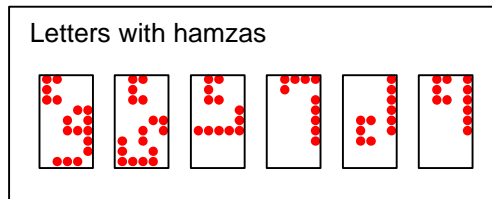
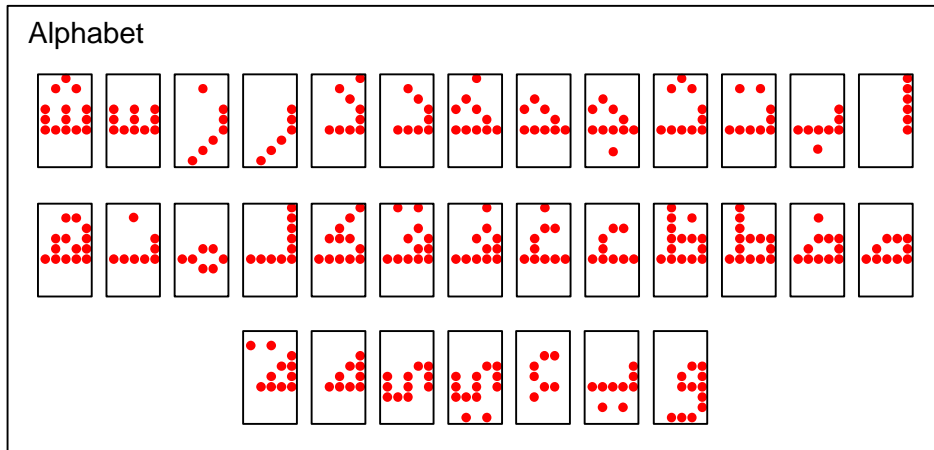
\* Element of the EBU "common core"

Code	Symbol	Description	Code	Symbol	Description
LP01	* p	small p	ND05	* 5	digit 5
LP02	* P	capital P	ND06	* 6	digit 6
LQ01	* q	small q	ND07	* 7	digit 7
LQ02	* Q	capital Q	ND08	* 8	digit 8
LR01	* r	small r	ND09	* 9	digit 9
LR02	* R	capital R	ND10	* 0	digit 0
LR11	r	small r with acute accent	SC01	Ⱬ	non-specific currency sign
LR12	R	capital R with acute accent	SC02	* £	pound sign
LR21	r	small r with caron	SC03	* \$	dollar sign
LR22	R	capital R with caron	SC	* €	European currency sign (ECU)
LS01	* s	small s	SP01	*	space
LS02	* S	capital S	SP02	* !	exclamation mark
LS11	s	small s with acute accent	SP03	* ¡	inverted exclamation mark
LS12	S	capital S with acute accent,	SP04	* "	quotation mark
LS21	š	small s with caron	SP05	* '	apostrophe
LS22	Š	capital S with caron	SP06	* (	left parenthesis
LS41	* s	small s with cedilla	SP07	* )	right parenthesis
LS42	* S	capital S with cedilla	SP08	* ,	comma
LS61	* ß	small sharp s, German	SP10	* -	hyphen or minus sign
LT01	* t	small t	SP11	* .	full stop, period
LT02	* T	capital T	SP12	* /	solidus
LT61	t	small t with stroke	SP13	* :	colon
LT62	T	capital T with stroke	SP14	* ;	semicolon
LT63	þ	small thorn, Icelandic	SP15	* ?	question mark
LT64	Þ	capital thorn, Icelandic	SP16	* ¿	inverted question mark
LU01	* u	small u	SA01	* +	Plus sign
LU02	* U	capital U	SA02	* ±	Plus/minus sign
LU11	* ú	small u with acute accent	SA03	* <	Less-than sign
LU12	Ú	capital U with acute accent	SA04	* =	Equals sign
LU13	* ù	small u with grave accent	SA05	* >	Greater-than sign
LU14	Û	capital U with grave accent	SA06	* ÷	Divide sign
LU15	* û	small u with circumflex accent	NS	¹	Superscript 1
LU16	Û	capital U with circumflex accent	NS02	²	superscript 2
LU17	* ü	small u with diaeresis or umlaut mark	NS03	³	superscript 3
LU18	Ü	capital U with diaeresis or umlaut mark	NF01	½	fraction one half
LU25	u	small u with double acute accent	NF04	¼	fraction one quarter
LV01	* v	small v	NF05	¾	fraction three quarters
LV12	* V	capital V	SM01	* #	number sign
LW01	* w	Small w	SM02	* %	percent sign
LW02	* W	capital W	SM03	* &	ampersand
LW15	w	small w with circumflex accent	SM04	* *	asterisk
LX01	* x	small x	SM05	@	commercial at
LX02	* X	capital X	SM12	* —	horizontal bar
LY01	* y	small y	SM13		vertical line
LY02	* Y	capital Y	SM17	μ	micro sign
LY11	ý	small y with acute accent	SM19	* °	degree sign
LY12	Ý	capital Y with acute accent	SM20	?	ordinal indicator, masculine
LY15	ÿ	small y with circumflex accent	SM21	?	ordinal indicator, feminine
LZ01	* z	small z	SM24	§s	section sign. .
LZ02	* Z	capital Z	SM25	¶	paragraph sign, Pllcrow
LZ11	z	small z with acute accent	SM30	* ←	leftward arrow
LZ12	Z	capital Z with acute accent	SM31	* →	rightward arrow
LZ21	ž	small z with caron	SM32	* ↑	upward arrow
LZ22	Ž	capital Z with caron	SM33	* ↓	downward arrow
NO01	* 1	digit 1	SM	‰	parts per thousand
NO02	* 2	digit 2	SM	α	alpha
NO03	* 3	digit 3	SM	∥	parallel
NO04	* 4	digit 4	SM	↵	reverse solidus
			SM	¯	overline
			SM	⎯	underline
			SM.	⏏	block.
			SM	©	copynght symbol

\* Element of the EBU "common core"

## APPENDIX 3

### Generation of the characters of the ASV-CODAR/1 set by means of a 5 x 9 matrix



## APPENDIX 4

### Coding table for a combined repertoire of ASV-CODAR/1 and certain Latin-based characters

Compatible 8-element extensions				a <sub>8</sub>	0	0	0	0	0	0	0	0	0	1	1	1	1	1	1	1
				a <sub>7</sub>	0	0	0	0	1	1	1	1	0	0	0	0	1	1	1	1
(Standards ISO 646 ISO 2022 and ISO 2375)				a <sub>6</sub>	0	0	1	1	0	0	1	1	0	0	1	1	0	0	1	1
				a <sub>5</sub>	0	1	0	1	0	1	0	1	0	1	0	1	0	1	0	1
a <sub>4</sub>	a <sub>3</sub>	a <sub>2</sub>	a <sub>1</sub>		00	01	02	03	04	05	06	07	08	09	10	11	12	13	14	15
0	0	0	0	00	NUL	TC7 (DLE)	SP	0	@	P	`	p				0	Ⓢ	٥	ب	ظ
0	0	0	1	01	TC1 (SOH)	DC1	!	1	A	Q	a	q			!	1	١	٥	ت	ع
0	0	1	0	02	TC2 (STX)	DC2	"	2	B	R	b	r			"	2	٢	١٥	ة	غ
0	0	1	1	03	TC3 (ETX)	DC3	#	3	C	S	c	s			#	3	٣	١٥	ش	ف
0	1	0	0	04	TC4 (EOT)	DC4	␣	4	D	T	d	t			␣	4	٤	١٥	ق	ك
0	1	0	1	05	TC5 (ENQ)	TC8 (NAK)	%	5	E	U	e	u			%	5	٥	١٥	ك	ل
0	1	1	0	06	TC6 (ACX)	TC9 (SYN)	&	6	F	V	f	v			&	6	٦	١٥	خ	ل
0	1	1	1	07	BEL	TC10 (ETS)	'	7	G	W	g	w			'	7	٧	١٥	د	م
1	0	0	0	08	FE0 (BS)	CAN	(	8	H	X	h	x			(	8	٨	١٥	ز	ز
1	0	0	1	09	FE1 (NT)	EM	)	9	I	Y	i	y			)	9	٩	١٥	ر	هـ
1	0	1	0	10	FE2 (LF)	SUB	*	:	J	Z	j	z			*	:	١٠	١٥	ز	و
1	0	1	1	11	FE3 (VT)	ESC	+	;	K	[	k	{			+	;	١١	١٥	س	ي
1	1	0	0	12	FE4 (FF)	IS4 (FS)	,	<	L	\	l	;			,	<	١٢	١٥	ش	Ⓢ
1	1	0	1	13	FE5 (CR)	IS3 (OS)	-	=	M	]	m	}			-	=	١٣	١٥	ص	ي
1	1	1	0	14	S0	IS2 (RS)	.	>	N	^	n	␣			.	>	١٤	١٥	ف	Ⓢ
1	1	1	1	15	S1	IS1 (US)	/	?	O	?	o	DE L			/	?	١٥	١٥	ط	Ⓢ

## APPENDIX 5

### Provisional proposed combined repertoire for the Arabic alphabet

Arabic characters  
(ASV- CODAR / 1

64

Indian figures used in some Arabian countries

a	b	c	d	e	f	g	h	i	j	k	l	m	n	o	p	q	r	s	t	u	v	w	x	y	z	ç	ğ	ı	ñ	ş	ß
A	B	C	D	E	F	G	H	I	J	K	L	M	N	O	P	Q	R	S	T	U	V	W	X	Y	Z	Ç	İ	Ñ	Ş	Û	
!	"	#	\$	%	'	(	)	*	£	,	-	.	/	:	;	<	>	?	-	&	¿	€									
á	à	â	ã	é	ê	ë	í	ì	ï	ó	ò	ô	ú	ù	ü	ij															
1	2	3	4	5	6	8	9	0																							
+	÷	=	°																												
←	→	↑																													







## APPENDIX 8

### Provisional proposed combined repertoire for the Hebrew alphabet

א	ב	ג	ד	ה	ו	ז	ח	ט	י	כ	ל	מ	נ	ס	ע	פ	ק	ר	ש	ת
---	---	---	---	---	---	---	---	---	---	---	---	---	---	---	---	---	---	---	---	---

Hebrew characters

27

Arabic characters

64

a	b	c	d	e	f	g	h	i	j	k	l	m	n	o	p	q	r	s	t	u	v	w	x	y	z	ç	ğ	ı	ñ	ş	ß
A	B	C	D	E	F	G	H	I	J	K	L	M	N	O	P	Q	R	S	T	U	V	W	X	Y	Z	Ç	İ	Ñ	Ş	ß	
!	"	#	\$	%	'	(	)	*	£	,	-	.	/	:	;	<	>	?	-	&	¿	€									
á	à	â	ä	é	è	ê	ë	í	ì	î	ï	ó	ò	ô	õ	ú	ù	û	ü	ij											
1	2	3	4	5	6	8	9	0	½	¼																					
+	÷	=	°																												
←	→	↑																													

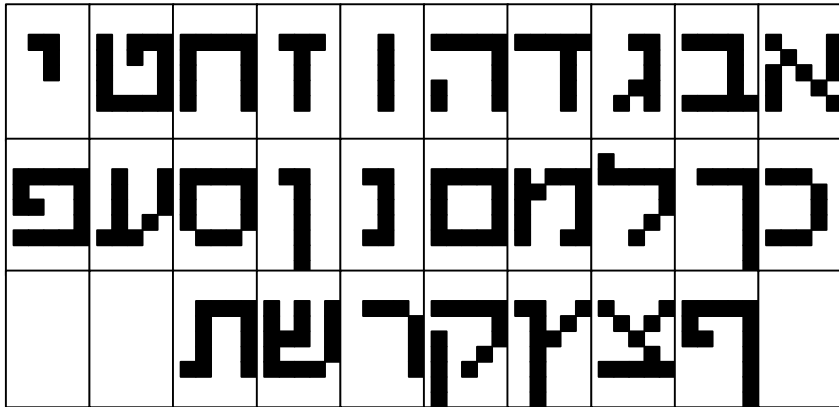
Common core + 2 fractions

127

## APPENDIX 9

### Generation of the characters specific to Hebrew and the figures of Indian origin, in 5 x 9 dot matrix

#### a) *Hebrew characters*



#### b) *Figures of Indian origin used in some Arabian countries*

